

SOLAS

NEON SIGN CO.



Neon Style Guide
April 2020

WTF is neon?

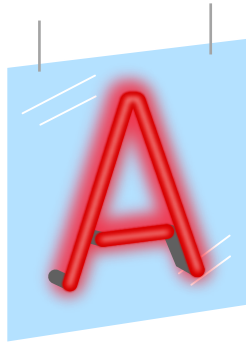
Real Glass neon is one of the oldest forms of illuminated signage. Invented at the turn of the 20th Century neon signs are made with glass tubing that is bent by hand using a variety of torches. The tube is sealed, put under high vacuum and filled with the rare gas, either Neon or Argon. A high frequency current is applied which excites the rare gas and gives that iconic glow. The actual process of making neon signs hasn't changed much in 100 years and we are happy to carry the tradition forward. There is lots of myths about neon - check out some more in depth FAQ here.



What We Do

Established in 2018 we are Scotland's only dedicated neon workshop specialising in design centred real glass neon signs for businesses and private clients. Our unique combination of old school skills and new school thinking gives us a unique approach to our work. Every single thing we do is made by hand, by us, for you in our Edinburgh shop. Any font style, design, logo or shape can be made by our team of glass benders with each neon piece being made painstakingly by hand. We can incorporate custom animations, metalwork or bespoke fabrication into any project. Most of our options for neons are self installable but we can also install your neon sign anywhere in the UK.

Basic Options



Hanging Panel (£)

This options is perfect for window hanging neons. Mounted on a discreet clear perspex panel the neon sign can be hung in a window or other semi permeant location. The neon can either come pre wired for self installation or the fitting of the sign could be done by our specialist neon installation team. This option is not a permanent installation and complies with all UK EIT wiring regulations.



Tray Mounted (£)

Tray mounted neons are great for a clean, seamless looks. The "tray" is made from a folded aluminium composite, either white or black, which sits about 70mm off the wall. This option is great because it can hides all the cable connections and transformer (which powers the sign). The tray is fixed to the wall with a basic hanging system that can be self installable or fitted by our specialist team. Tray mounted neons can be removed and put on another wall which makes them great for flexible or rented spaces. This option complies with all UK EIT wiring regulations.



Perspex Box (££)

Our most popular options by far which offers the best versatility and functionality. The neon comes encased within a custom made clear perspex box, fully wired ready for hanging or free standing. This option is perfect for hanging on a wall or in a shop or at home and has the added security of a protected face. We'll send you the neon ready to be hung with wall fixings or supports and is fully self installable. If the neon sign was being used for events or being moved more then once this is the perfect way to do it! This option is not a permanent installation and complies with all UK EIT wiring regulations.

Bespoke Options



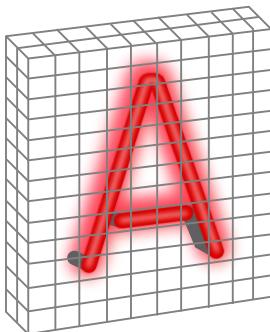
Direct to Wall (££)

Direct to wall is a classic bespoke mounting method. The neon tubes are mounted direct onto the wall with tubes supports. This options gives that authentic neon look. Wire connections are made between the different tubes sections and the entire piece is wired together onsite by our neon installation team. This installation is completed by trained professionals and is wired into either the mains or through an available power supply. We work closely with electrical companies if the installation needs a certification. This option is permanent installation and can complies with all UK EIT wiring regulations.



Channel Letter (£££)

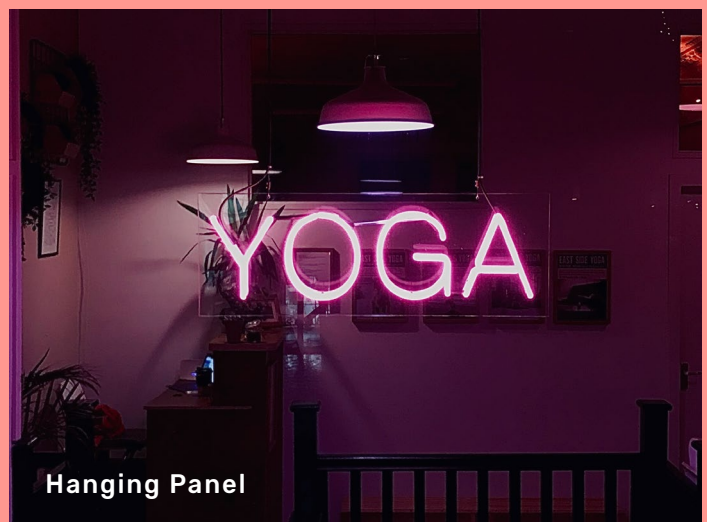
This option combine custom metalwork and neon. Metal letters are cut and formed in a 3D style with the completed neon letters placed inside. Letters can be made in any font with different neon fills from single line, staggered or outlined. An iconic signage choice or anyway to make a huge statement. Bespoke installation by our specialist team is recommended but these can be fabricated to allow self installable fitting. All wiring installation can complies with UK EIT wiring regulations.



Caged Face (££)

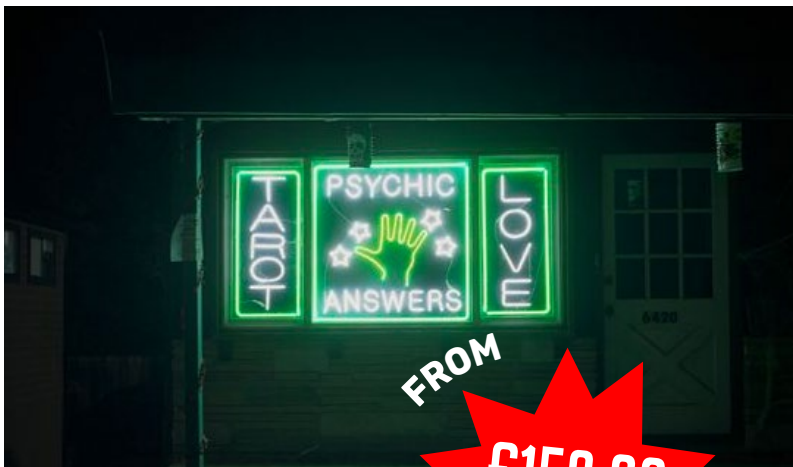
Caged neon are perfect for bespoke installation that want that industrial look. Combining any of the mounting options, putting a custom cage over a neon pieces is both functional and gives an added dimensional texture. With a variety of metal grades and styles available we work with clients to design and fabricate each bespoke cage. All wiring installation can complies with UK EIT wiring regulations.

Style Examples



Something Different?

Neon lighting is such a dynamic and fun way of displaying a message, logo or brand. Its application doesn't just lie in signage and can be used effectively in lighting displays, artworks and sculptures or just to create that iconic neon haze. We manufacture all our neon in-house so are always looking for new ways to do things or try something different. Nothing is off limits! Attached are a couple examples of somethings we could do but if your imagination is going wild, let us know, we are always keen to sink our teeth into a challenge!



Window Framing

This is a great way to create that iconic ambience from neon lighting. The neon tubes are installed by our specialist team around the inside of the window frame giving your business an instant and unmissable presence. This style is effective and affordable with window framing neon + installation starting at **£150.00 (VAT inc.)**.

Architectural Lighting

With an endless array of options for neon lighting design this is where your imagination can really go nuts! Up until the mid 2000's neon was the main form of architectural lighting illuminating everywhere from shopping malls, cinemas and offices. With today's advancement in power supply options using neon as interior or exterior lighting is extremely safe and viable. Get in touch if you have an idea and want to see it realised!

